



Teddington to Broadness

NAVIGATION ABOVE PUTNEY BRIDGE

Rowing Navigation Buoys

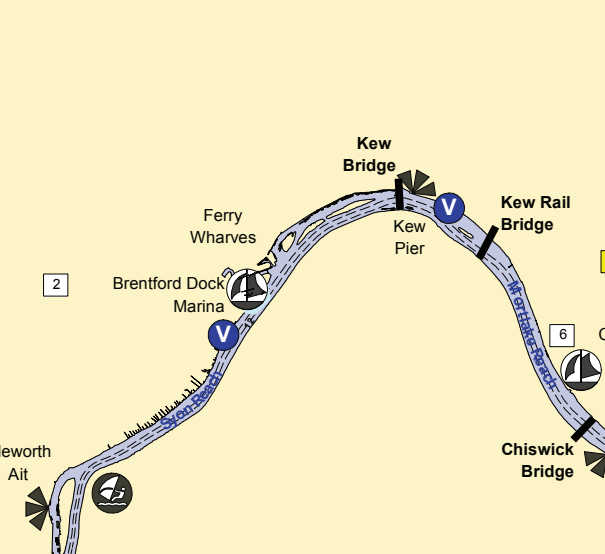
There is a 1m deep channel on the side of the river, the edge of which is marked by red and green buoys between Putney and Brentford. These ensure the segregation of rowing craft that are rowing against the tide from other river users and motor vessels should treat these buoys as ordinary port and starboard lateral marks, avoid navigating between the buoys and the shore (the "inshore zone").

Recreational Craft

There may be a lot of recreational boats on the move above Putney Bridge, particularly at weekends. Regardless of the 8 knot speed limit vessels must pay attention to their wash. All users of paddle powered craft must be familiar with the relevant code of practice, available on our website www.boatingonthames.co.uk

River Events

The area of river between Putney Bridge and Eel Pie Island is home to regattas and professional rowing events including the Boat Race and the Great River Race. These events can lead to navigational restrictions and full river closures. You should check the PLA's Online Events Calendar www.pla.co.uk/Events/Annual-Events-Calendar or listen to London VTS on VHF Channel 14 for further information.



Key:

- Starboard Buoy
- Port Buoy
- Headway Gauge
- Spitway/Causeway
- Flashing Light
- Bridges
- Yacht Clubs/Marinas
- Yacht Clubs/Marinas with visitor moorings
- PLA Visitor Mooring
- High Speed Craft
- Windsurfing
- Refuelling Point
- Speed Limit
- 8 Knot Speed Restriction
- High Speed Craft Zone
- Controlled Navigation Zone
- Mileage Marker from London Bridge

STAND-UP PADDLEBOARDING

Stand-Up Paddleboarding is permitted on the tidal Thames between Teddington Lock and Putney Pier during the day providing you follow the 'Code of Practice for Paddling on the Tidal Thames'.

Downriver of Putney Pier the river is much busier, with the presence of fast ferries, plus barges with limited maneuverability. As a result, navigating a paddleboard requires greater knowledge, skill and preparation. The use of the tidal Thames for paddleboarding below Putney Pier is therefore only permitted for more experienced paddlers who have undertaken recognised training courses, and only at the times when the river will be less busy. The Paddling Code contains further information about paddling in this area.

PLA EBB TIDE FLAG WARNING ADVICE

The PLA has established a warning system to indicate potential fast ebb tide flows created by land water from the non-tidal Thames (fluvial flow). The advice is updated daily at 06:00 and is readily available as a widget on both homepages of: www.boatingonthames.co.uk and www.pla.co.uk.

- There are three main levels of advice, which are:
- RED FLAG - Extreme Caution - EBB TIDE Very Strong Fluvial Flows
 - YELLOW FLAG - Caution - EBB TIDE Strong Fluvial Flows
 - GREEN FLAG - Average Fluvial Flow Conditions

In addition there is a fourth level (BLACK FLAG) of advice for all river users to note; when there are low fluvial flows and the Richmond Lock low water reads below 0m. This usually occurs when the fluvial flow rate is less than usual at Teddington Weir and the upper reaches of the tideway can expect lower than predicted tidal levels.

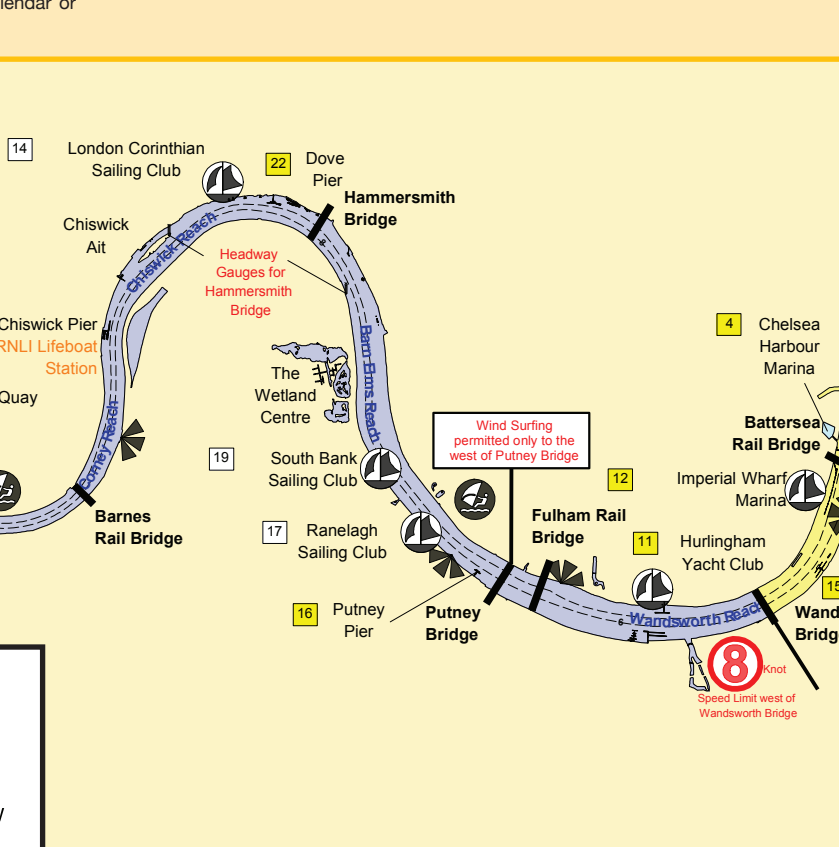
Reduced Upriver Depths

In prolonged dry weather periods, water rates flowing over Teddington Weir are often significantly reduced. This means that depths at low water in the upper reaches of the tidal Thames may be much lower than predicted or charted. All river users must take the potential of reduced depths into account at such times and to check on the latest PLA advice published on: www.boatingonthames.co.uk and note the status of the PLA Ebb Tide Flag Warning Advice. It is also very important to keep well clear of larger vessels that have limited space to manoeuvre.

Mortlake and Syon Reach - Navigation in the vicinity of Kew Road Bridge and Pier

The river can be very busy around Kew Bridge with rowers, leisure boats, Stand-Up Paddleboarding and larger passenger boats manoeuvring on and off Kew Pier. Visibility is also greatly restricted by Kew Bridge which is on a bend in the river.

Drivers of motor vessels must sound one prolonged blast when approaching the bridge from either direction and when leaving Kew Pier. Whichever vessel you are in, you should keep a good lookout, navigate with extreme caution and listen carefully for sound signals.



RICHMOND LOCK & HALF TIDE WEIR

A half-tide lock and rising weir gates operate at Richmond. The lock is 76.2m long and 7.9m wide. It will cost you £8 to use the lock, which has a Lock Foreman on duty 24 hours a day. (2019 charges, please refer to PLA Tide Tables for current charges). The lock foreman is available via VHF Channel 80 or on telephone: 020 8940 0634.

When the weir gates are down and the weir closed, the arches display the signals prescribed in the Thames Byelaws for closed bridge arches (see the Thames Bridges - Lights and Shapes section). In addition, an illuminated sign on both lock entrances reads 'Weirs are lowered please use Lock'. The lock must be used in these circumstances.

You can use the timber mooring piles along the Old Deer Park bank if you are waiting to use the lock. Canoes and skiffs can use the small craft rollers on the Middlesex bank arch instead of the lock. At Low Water it can be shallow below the weir and you should take care when approaching from downriver.

Exclusion Zone

Mariners should not enter the Richmond Lock, Weir and Footbridge Exclusion Zone whilst the weirs are in the lowered position or when they are being operated. Only when the weir gates are fully raised and the Closed Arch Signs have been removed is it permitted to navigate into the navigation exclusion zone and through Richmond Footbridge No. 2 or No. 3 arches.

Only those vessels manoeuvring on or to the Lock island berths, vessels engaged in emergency operations or smaller vessels wishing to utilise the boat rollers in No. 1 arch are exempt from this requirement.

DRYING OUT FACILITIES

The PLA has two drying out facilities in the upper district at Strand-on-the-Green Grid and Isleworth Drawdock. Isleworth Drawdock is a stretch of vertical river wall with regularly spaced piles and a riverbed suitable for taking the ground (for appropriate vessels), that is directly accessible by road. Strand-on-the-Green grid is a timber grid suitable for smaller vessels, but without road access. The grid is limited to flat bottomed vessels of 25m length, 9m beam and a displacement of 200 tons. The charge for use of either facility can be found in the PLA Tide Tables. For further information and bookings, please contact the Harbour Service on 07711 640 095.

River Thames Recreational Users Guide - NOT FOR NAVIGATION -

Hermitage Moorings

- two visitor berths for up to 2 weeks in 4
- on river near Tower Bridge & St Katharine Docks
- available to all vessels but best suited to barges
- +44(0)20 74812122 manager@hcmoorings.org

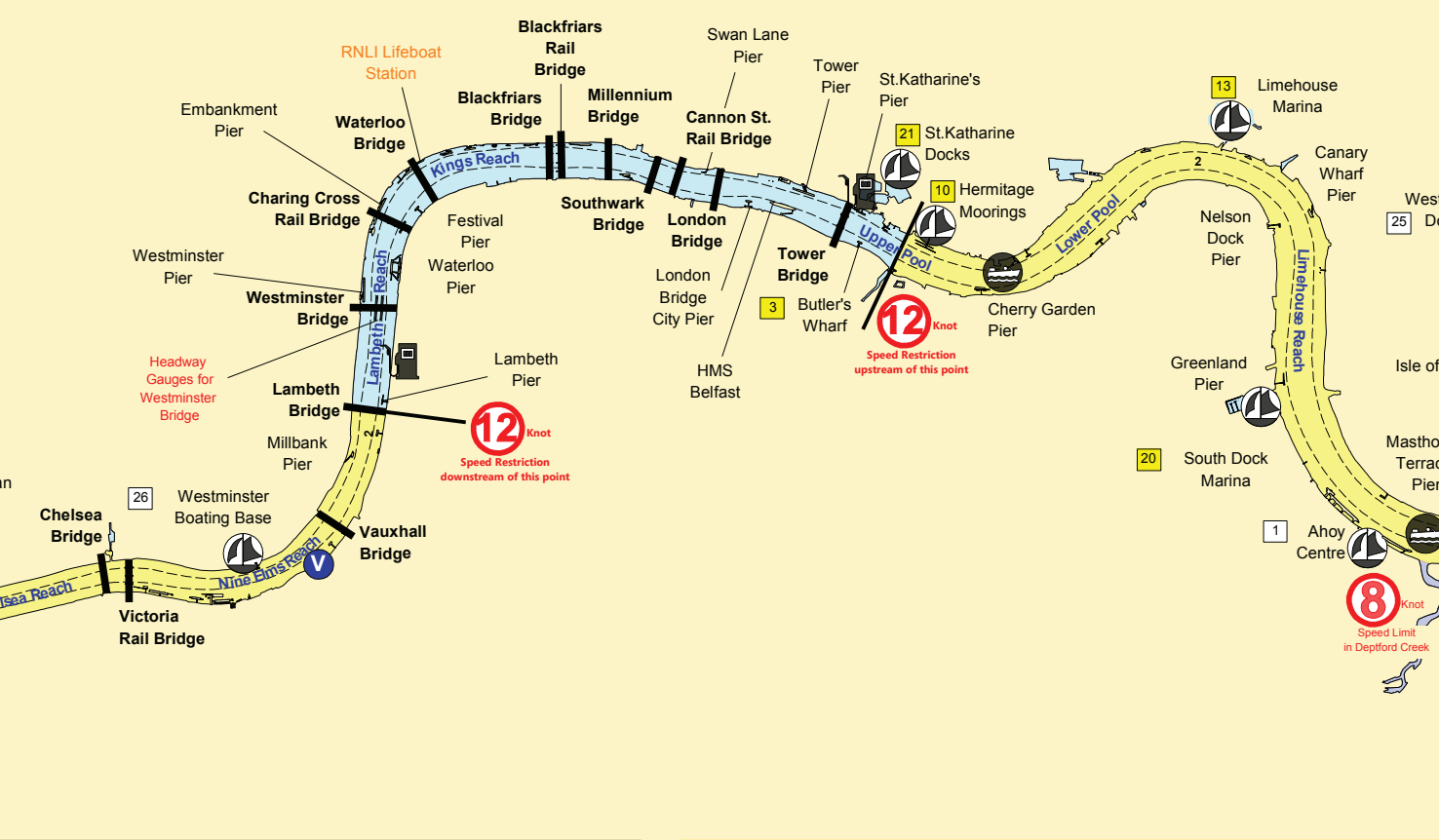
For information and restrictions (eg draft limits) see: www.heritagemoorings.org/hermitage-river-projects/visitor-berths



ST. KATHARINE DOCKS
A CAMPER & NICHOLSONS MARINA

Over 20 restaurants, cafes & bars on site
Visitor & annual berths in the centre of London
Family friendly events all the year round

marina.reception@skdocks.co.uk
VHF Ch80 | 020 7264 5312



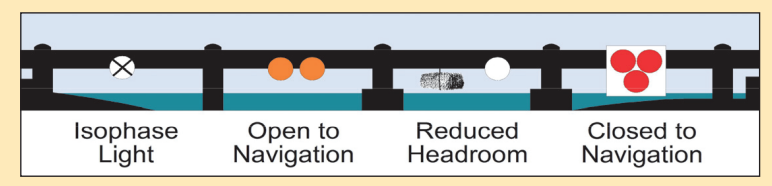
South Dock Marina Boatyard

- 20 Tonne crane for lift out or lift and hold for survey.
- 3.5 Tonne telehandler.
- Mast and engine lifts.
- Storage ashore for vessels up to 18 m LOA.
- Various marine support services located on site.

Located 2 miles downstream from Tower Bridge
Tel: 020 7252 2244
Email: southdockmarina@southwark.gov.uk

SWIMMING

Swimming is not permitted in many areas of the tidal Thames. Swimmers face danger from powerful currents, undertows, underwater obstructions, deep mud, passing vessels and waterborne disease. Swimming also presents a hazard to other river users by impeding the navigation of vessels, especially near bridges, piers, barriers, etc. Please see Thames Byelaw 21.



TOWER BRIDGE NAVIGATION

There is heavy congestion at all states of the tide near Tower Bridge, including large tugs and tows as well as passenger vessels operating between London Bridge, City, Tower, and St Katharine's piers.

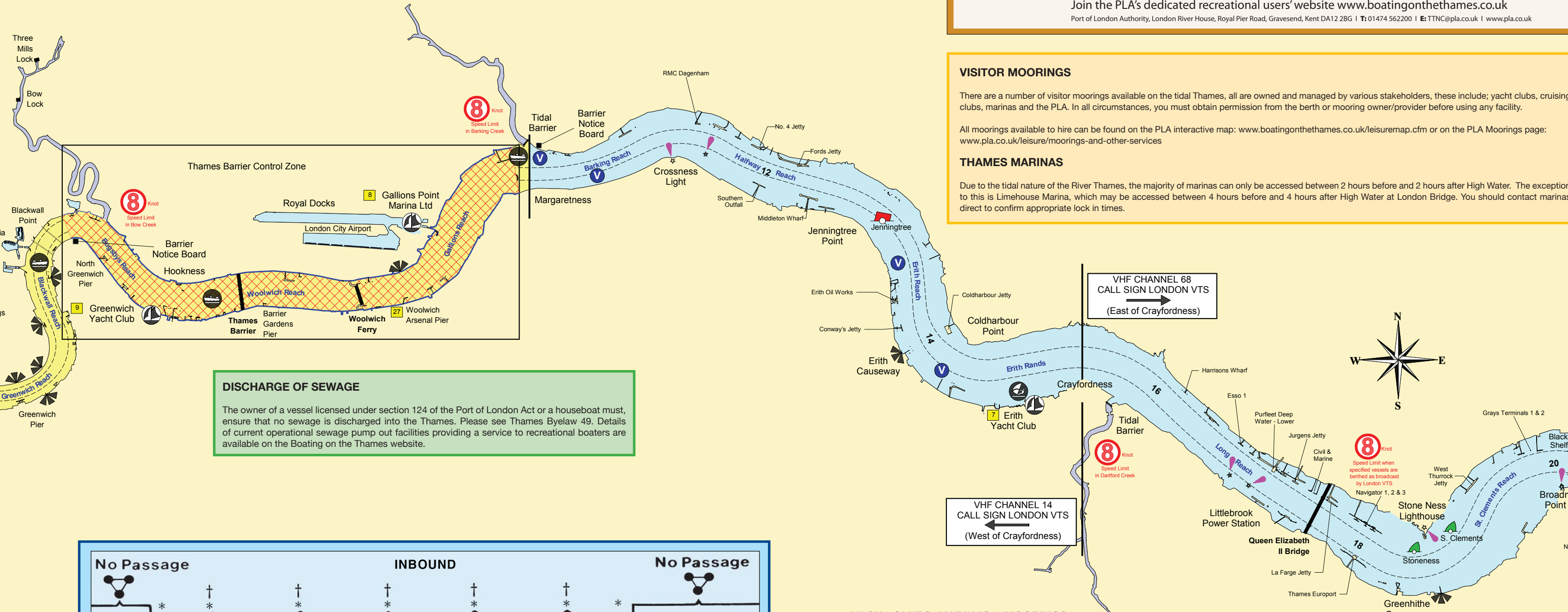
- In the summer, this congestion increases as private cruisers and yachts enter or exit St Katharine's Lock. This lock is operational for two hours either side of High Water.
- You should navigate this area with extreme care using No. 1 (North) Arch of Tower Bridge inward bound if the way is clear to navigate. Outward bound, smaller vessels should use No. 3 (South) Arch Tower Bridge.
- During the summer, large cruise ships are active in the Upper Pool to various moorings. A Harbour Master's launch, call sign "THAMES PATROL", will be controlling traffic in these situations. You must contact "THAMES PATROL" on VHF Channel 14 if you wish to pass this area at these times.

VESSEL SUITABILITY

Before navigating on the tidal Thames you should ensure your vessel is suitable for the expected tidal and weather conditions.

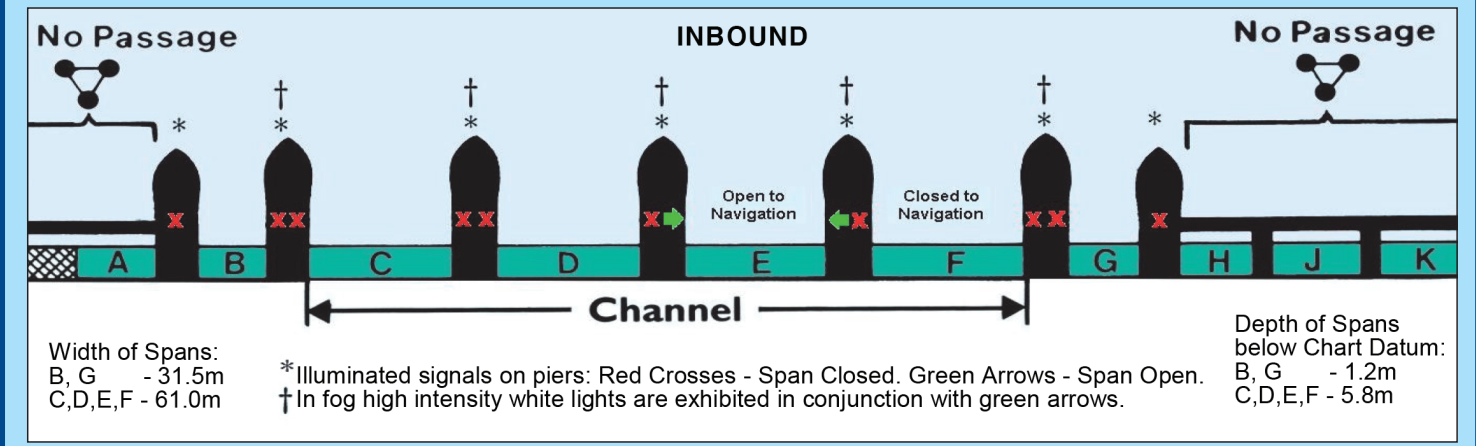
You should carry out checks on your vessel to ensure that water cannot easily enter through any openings; for example engine room vents that are too close to the waterline, cabin doors left open or insufficiently sealed weed hatches.

Be aware that even on the calmest day river conditions can be exacerbated by the wash from vessels, particularly in the busy central London section.



DISCHARGE OF SEWAGE

The owner of a vessel licensed under section 124 of the Port of London Act or a houseboat must ensure that no sewage is discharged into the Thames. Please see Thames Byelaw 49. Details of current operational sewage pump out facilities providing a service to recreational boaters are available on the Boating on the Thames website.



THAMES BARRIER

The Thames Barrier consists of ten spans, lettered A to K, from south to north. Spans B to G are open to navigation, subject to planned restrictions for flood defence purposes.

The Thames Barrier Control Zone (TBCZ) from Margaretness to Blackwall Point, is marked by fixed notice boards at Barking Point, Blackwall Point and Blackwall Stairs.

General Direction Requirements

All vessels fitted with a VHF radio navigating within the TBCZ, regardless of size, must seek permission from London VTS (via HF Channel 14) to proceed when:

- Leaving berths or locks within the TBCZ, and intending to pass through the Thames Barrier;
- Leaving a berth or other location between the Woolwich Ferry terminal and Hookness, whether intending to pass through the Thames Barrier or not;
- Entering the TBCZ at either Margaretness or Blackwall Point, whether or not they are intending to pass through the Thames Barrier; if needed, VTS will allocate a navigational span;

Under normal conditions, navigation is through one span in each direction, indicated by green arrows on the barrier's piers.

Small Vessels

All small vessels, not fitted with VHF radio (including dinghies, power boats, narrow boats, sculls, rowing boats and canoes), are advised to contact London VTS by telephone for allocation of a span.

They must navigate through the span that lies furthest to the starboard side of the channel and marked as open to navigation.

Overtaking and Manoeuvring Restrictions

Any vessel seeking to overtake or carry out manoeuvres in the TBCZ must also get clearance from London VTS to do so in advance.

Vessels Under Sail

Vessels sailing between the Woolwich Ferry Terminal and Hookness must keep to the starboard side of the fairway and not impede any other vessels.

If fitted with a working engine, vessels should use motor power to navigate through the Thames Barrier.

Routine Barrier Closures

The Thames Barrier is subject to regular scheduled closure for maintenance. These closures are notified by a Notice to Mariners, which can be accessed via www.boatingonthames.co.uk

When the barrier is closed, vessels must not enter the TBCZ without permission from VTS and must comply with any instructions given, either by VTS or a PLA harbour service launch.

Smaller craft should expect to be directed to a holding position within the TBCZ.

Other Flood Barriers

Head clearance above Mean High Water Springs:

- Barking Creek - 33.5m
- Dartford Creek - 12.2m
- Easthaven Creek - 3.3m
- Fobbing Creek - 9.3m
- Benfleet Creek - 1.6m

Red flashing lights indicate when these barriers are closed.

YACHT CLUBS, MARINAS & MOORINGS

- Ahoj Centre
Tel: 020 8691 7502
www.ahoy.org.uk
- Brentford Dock Marina
Tel: 07970 143987
www.brentfordcruisingclub.co.uk
- Butlers Wharf
Tel: 020 7378 1211
info@lvetts.co.uk
- Chelsea Harbour Marina
Tel: 07770 542783
www.chelseaharbourmarina.com/marina
- Chiswick Pier
Tel: 0208 742 2713
www.chiswickpier.org.uk
- Chiswick Quay Marina
Tel: 020 894 8743
www.chiswickquay.com/marina
- Erith Yacht Club
Tel: 0845 0942148/68
www.erithyachtclub.org.uk
- Gallions Point Marina Ltd
VHF Channel (37) or 80
Tel: 020 7476 7054
www.gallionspointmarina.co.uk
- Greenwich Yacht Club
Tel: 0844 735846
www.greenwichyachtclub.co.uk
- Hermitage Moorings
Tel: 020 7481 2122
www.hcmoorings.org
- Hurlingham Yacht Club
Tel: 020 8788 5547
www.hurlinghamyachtclub.co.uk
- Imperial Wharf Marina
Tel: 0207 384 3932
www.imperialwharfmarina.co.uk
- Limehouse Marina
VHF Channel 80
Tel: 020 7308 9930
www.bwml.co.uk/marinas
- London Corinthian Sailing Club
Tel: 020 8748 3280
www.lcsc.org.uk
- Plantation Wharf
www.thamesmooring.com
- Putney Pier
Tel: 020 7378 1211
info@lvetts.co.uk
- Ranelagh Sailing Club
Tel: 020 8788 4986
www.ranelagh-sc.co.uk
- Richmond Yacht Club
Tel: 07970 688807
www.richmondyachtclub.co.uk
- South Bank Sailing Club
Tel: 020 8921 6000
www.southbanksailingclub.co.uk
- South Dock Marina
VHF Channel (37)
Tel: 020 7252 2244
www.southwark.gov.uk/southdockmarina
- St Katharine Docks
Tel: 0207 264 5312
www.skdocks.co.uk
- The Dove Pier
Tel: 0207 848 2715
- Twickenham Yacht Club
Tel: 020 8892 8487
www.twickenhamyc.co.uk
- W Hamerton & Co
Tel: 020 8892 9620 / 07759 482899
www.hamertonsterry.com
- West India Dock (Canals & River Tiers)
Tel: 020 7987 7260
www.canalrivertrust.org.uk
- Westminster Boating Base
Tel: 020 7821 7388
www.westminsterboatingbase.co.uk
- Woolwich Arsenal Pier
Tel: 0207 8921 6000
www.royalgreenwich.gov.uk

CRIME DOESN'T RESPECT OUR BORDERS

IF YOU SEE ANYTHING SUSPICIOUS ABOUT WHERE, WHEN OR HOW A VESSEL AND CREW ARE OPERATING, REPORT IT.

Call the Police on 101, quote KRAKEN.

You can contact Crimestoppers anonymously on 0800 555 111. In an emergency always dial 999.

RECREATIONAL BOATERS JOIN THE TTNC - IT'S FREE!

The PLA's 'Tidal Thames Navigators' Club' gives all recreational boaters access to information tailored to their navigation on the river. It's FREE to join, its main aim is to further improve communication with recreational boaters.

- Members will receive:**
- Regularly updated river safety information tailored to their type of boating
 - Tide Tables and Port Information Handbook
 - The PLA Recreational Users Guide
 - Mariners Guide to Bridges on the Tidal Thames and A2 Colour Folio Charts at a reduced price

As a boat owner it will give you increased security, knowing that the Harbour Master can easily get in touch with you should anything happen to your boat.

Join the PLA's dedicated recreational users' website www.boatingonthames.co.uk
Port of London Authority, London River House, Royal Pier Road, Gravesend, Kent DA12 2BG | T: 01474 562200 | E: TTNCL@pla.co.uk | www.pla.co.uk

VISITOR MOORINGS

There are a number of visitor moorings available on the tidal Thames, all are owned and managed by various stakeholders, these include; yacht clubs, cruising clubs, marinas and the PLA. In all circumstances, you must obtain permission from the berth or mooring owner/provider before using any facility.

All moorings available to hire can be found on the PLA interactive map: www.boatingonthames.co.uk/leisuremap.cfm or on the PLA Moorings page: www.pla.co.uk/leisure/moorings-and-other-services

THAMES MARINAS

Due to the tidal nature of the River Thames, the majority of marinas can only be accessed between 2 hours before and 2 hours after High Water. The exception to this is Limehouse Marina, which may be accessed between 4 hours before and 4 hours after High Water at London Bridge. You should contact marinas direct to confirm appropriate lock in times.

TIDAL THAMES: RECREATIONAL USERS GUIDE

DON'T MIX BOOZE AND BOATS

BOAT SMART, BE SOBER

PAY ATTENTION WHEN NAVIGATING UNDER BRIDGES

REDUCED HEADROOM
1 WHITE LIGHT OR A BALE OF STRAW

CLOSED ARCH
3 RED LIGHTS NEVER USE A CLOSED ARCH

BUOYANCY AIDS AND LIFE JACKETS USELESS UNLESS WORN

ALWAYS USE A KILL CORD

STOP THE PROP

IN POOR VISIBILITY OR AT NIGHT YOU MUST SHOW CORRECT LIGHTS

STARBOARD (Green)
PORT (Red)

ALWAYS KEEP A GOOD LOOKOUT

NAVIGATE TO STARBOARD
THAT'S THE RIGHT-HAND SIDE IN THE DIRECTION OF TRAVEL

GIVE-WAY TO DEEPER VESSELS

LARGER VESSELS

LEFT-HAND PORT
RIGHT-HAND STARBOARD

WATCH OUT FOR WASH

LOWER THAMES AND ESTUARY NAVIGATION

Due to the large number of ships arriving and departing the Thames Estuary, recreational vessels should avoid using the Black Deep, Fisherman's Gat and Princes shipping channels. Instead, you should use:

- The Middle Deep, the Swin and Warp, or Barrow Deep and Warp when navigating to or from the North;
- The Horse and Gore and Four Fathom channels when navigating to or from the South; and
- Foulger's Gat in preference to Fisherman's Gat.

YANTLET CHANNEL NAVIGATION

The Yantlet Channel is marked by gated buoys to provide large vessels with a deep-water channel. You should keep your recreational vessel well clear of the Yantlet Channel and prior to using the crossing routes marked on this guide call 'London VTS' to inform them of your intentions, while adhering to the following procedure whenever possible:

Recreational users are advised to maintain a listening watch on the appropriate London VTS sector VHF channel - VHF Ch 68 or Ch 69 (as appropriate).

WATERSPORTS

Personal Water Craft

Personal Water Craft (PWC) should only be used in authorised areas and are not permitted in a fairway or within 200 metres of any public beach, bathing place, residential property, wharf or jetty on the tidal Thames. For further information please refer to the Code of Conduct for use of Personal Water Craft on the Thames Estuary which is available to download from our website: <http://www.pla.co.uk/assets/thamespwccode.pdf>.

Water Skiing

The authorised areas for water-skiing are:

- Marsh End Sands - Launch at Two Tree Island Causeway
- Tewkes Creek - Launch at Two Tree Island Causeway
- Holehaven Creek - Launch at Pitsea Hall County Park

Water skiers must keep well clear of the Fobbing and Easthaven tidal barriers and their boat must manoeuvre at a slow speed appropriate to the local conditions when going to or from the authorised areas.

If you are in charge of a craft towing water skiers (or people involved in similar activities), you must ensure:

- A lifebuoy or other means of preserving life is on board;
- At least one other person is aboard and able to take charge of the vessel or to give assistance during the towing; and
- There are always two 'look-outs' on the towing boat, one to control and watch the boat and one to watch the participant.

Wind Surfing

The tidal Thames is extremely hazardous for wind surfers. You should therefore restrict this activity to the following areas:

- Westward of Putney Bridge; and
- Areas clear of the navigable channel and approaches to commercial berths in:

- Erith Sands
- Mucking Flats
- Blyth Sands/All Hallows
- Southend Pier to Canvey Island (Thorney Bay)

EMERGENCIES

You should always carry a mobile phone (in a water-proof case) for emergency use.

For life-threatening emergencies immediately call 999 or 112 and ask for the Coastguard.

They will send the appropriate assistance - be prepared to give your name, location, number of persons aboard and the nature of the emergency.

You can also broadcast a "MAYDAY" or "PAN-PAN" call on VHF Channel 16 or the London VTS channel for the area you are in; or calling London Coastguard or the Thames Barrier Navigation Centre (London VTS) directly.

INCIDENTS & NEAR MISSES

All river users should report any navigational incidents or Near Misses to London VTS, via the PLA App or Website - <http://www.pla.co.uk/Safety/SMS/Reporting-Navigational-Incidents-Safety-Concerns>

Port Control Centre, Gravesend

For incidents between the outer PLA limits at NE Spit and Sunk pilot stations and Crayfordness

Call sign: London VTS

VHF Channels: Outer Limits to SR No. 4 Buoy - Channel 69
SR No. 4 Buoy to Crayfordness - Channel 68
Telephone: Duty Port Controller 01474 560311 (24hrs)

Thames Barrier Navigation Centre, Woolwich

For incidents between Crayfordness and the landward PLA limit at Teddington

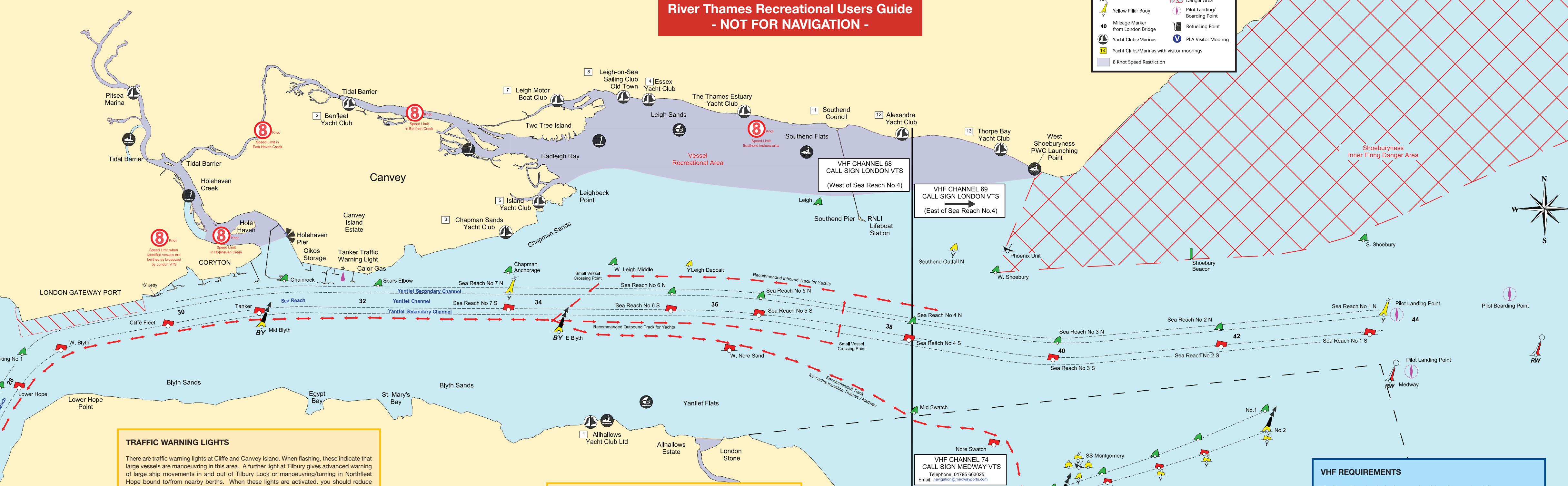
Call sign: London VTS

VHF Channels: Crayfordness to Teddington - Channel 14
Telephone: Duty Officer 0203 260 7711 (24hrs)

Key:

Starboard Buoy	High Speed Craft
Port Buoy	Windsurfer
North Cardinal Buoy	Speed Limit
South Cardinal Buoy	Skipway/Causeway
Safe Water Pillar Buoy	Beacon
Yellow Pillar Buoy	Flashing Light
Mileage Marker from London Bridge	Danger Area
Yacht Clubs/Marinas	Pilot Landing/Boarding Point
Yacht Clubs/Marinas with visitor moorings	Refuelling Point
8 Knot Speed Restriction	PLA Visitor Mooring

River Thames Recreational Users Guide - NOT FOR NAVIGATION -



- ### YACHT CLUB & MARINA INFORMATION
- Allhallows Yacht Club Ltd
Tel: 01634 270788
www.allhallowsyachtclub.net
 - Benfleet Yacht Club
Tel: 01268 792278
www.benfleetyachtclub.org
 - Chapman Sands Yacht Club
Tel: 01268 682643
www.chapmansands.gosnold.info
 - Essex Yacht Club
Tel: 01702 478404
www.essexyachtclub.co.uk
 - Island Yacht Club
Tel: 01268 510360
www.islandyachtclub.org.uk
 - Isele of Sheppey Sailing Club
Tel: 01795 663052
www.iossc.org.uk
 - Leigh Motor Boat Club
Tel: 01702 714858
www.leighmotorboatclub.com
 - Leigh-on-Sea Sailing Club
Tel: 01702 476788
www.leighsailingclub.org
 - Queenborough Harbour Trust
Tel: 01795 662051
www.queenborough-harbour.co.uk
 - Queenborough Yacht Club
Tel: 01268 663955
www.queenboroughyachtclub.co.uk
 - Southend Council
Tel: 01702 215620
www.southend.gov.uk
 - Alexandra Yacht Club
contact@alexayachtclub.co.uk
www.alexayachtclub.co.uk
 - Thorpe Bay Yacht Club
Tel: 01702 587563
www.tbyc.org
 - Thurrock Yacht Club
Tel: 01375 373720
www.thurrockyachtclub.org
 - Gravesend Embankment Marina
Tel: 01474 535700
www.theembankmentmarina.net
 - Gravesend Sailing Club
Tel: 07538 326623 (Clubhouse)
Tel: 07506 367699 (Duty Officer)
www.gravesendsailingclub.co.uk
 - Gravesend Town Pier & Mooring Buoys
Tel: 01474 337600
www.gogravesham.uk/see-and-do/gravesend_pontoon.aspx

TRAFFIC WARNING LIGHTS

There are traffic warning lights at Cliffe and Canvey Island. When flashing, these indicate that large vessels are manoeuvring in this area. A further light at Tilbury gives advanced warning of large ship movements in and out of Tilbury Lock or manoeuvring/turning in Northfleet Hope bound to/from nearby berths. When these lights are activated, you should reduce speed if necessary and keep clear of large manoeuvring vessels.

LOWER THAMES NAVIGATION

A small craft cannot always be seen from a ship's bridge, this 'blind arc' can be up to one mile ahead and half a mile on either side of the bow. If you cannot see the bridge, the bridge cannot see you and the ships will not be able to take avoiding action.

Due to their size, ships in narrow channels may not have room to take avoiding action. You should not underestimate the speed of ships and, if near large vessels, you should ensure that you stay well clear and take effective evasive action, ensuring you obey the COLREGS.

Large vessels have little room to manoeuvre in narrow channels.

Queenborough Harbour welcomes you Visitor Moorings

- 24 hour access to deep water moorings
- Vessels up to 30m (100ft)
- River Taxi every weekend and every day in high season
- Local refreshments and services in a rural setting
- Friendly helpful staff

01795 662051
VHF CH 08

www.queenborough-harbour.co.uk

THAMES MARINE SERVICES

FUELLING THE THAMES

Our services

- Fuel delivery by barge
- Lubricants
- Engineering Services
- Waste Oil Removal
- Moorings Services
- Crewing Services
- Chandlery
- Diagnostics
- Generator service & repairs
- Main engine service & repairs
- Electrics
- Gear box & propulsion maintenance
- Plumbing
- Refrigeration
- Hydraulics

0144 (0) 7827 816 023 +44 (0) 203 793 9925
office@tmslondon @ThamesMarine1
www.thamesmarineservices.co.uk

VHF REQUIREMENTS

The Port of London Authority strongly advise all recreational river users to carry and use a VHF radio and maintain a continuous listening watch to London VTS at all times. If your vessel is over 13.7m (45ft) you must carry a VHF radio capable of communicating with London VTS. Special arrangements are in place to exempt Narrow Boats which transit only between the Grand Union Canal and the non-tidal Thames via the Brentford and Teddington Locks, from carrying a VHF Radio. If you intend on exercising this exemption, you must telephone London VTS (Thames Barrier Navigation Centre) to report immediately before, and again on completion, of your transit of the tidal Thames. In addition to carrying a VHF, vessels over 40m in length or 50 gross tons must report their arrival, departure and passage through the port at the designated reporting points (these are marked on Thames charts).

LONDON VESSEL TRAFFIC SERVICES

The PLA VTS centres at Gravesend and Woolwich monitor vessel traffic movements on the Thames. They operate 24 hours a day and broadcast navigational information and advice every half-hour. Be aware that VHF radio conversations, telephone calls, CCTV and radar images are recorded in both VTS centres. London VTS VHF channels are as follows:

- Channel 69 (from the seaward limit to Sea Reach No. 4 Buoy) - Navigational broadcasts are made at 15 minutes and 45 minutes past each hour.
- Channel 68 (from Sea Reach No 4 Buoy to Crayfordness) - Navigational broadcasts are made on the hour and at 30 minutes past each hour.
- Channel 14 (from Crayfordness to Teddington) - Navigational broadcasts are made at 15 minutes and 45 minutes past each hour.

