

# Events at St. Katharine Docks

## Our Spaces



# Welcome

## St. Katharine Docks

St. Katharine Docks is Central London's only Marina and provides you with a unique and dynamic backdrop for your event or filming opportunity.

Whether you're looking to host a small intimate event for just ten people, or run an event for hundreds, we would love to hear from you.

The Estate has various spaces available for a range of events or tv and filming opportunities, if you're looking for an iconic London landmark please contact us via [events@skdocks.co.uk](mailto:events@skdocks.co.uk) to discuss your requirements further or to arrange a site visit.



# Film & Photography

## SKD as a Location

St. Katharine Docks can provide a picturesque and unique backdrop to your film, TV programme or documentary. Inside the Docks we benefit from wonderful marina views, whilst just outside of the Marina on the Riverside, we have one of the very best views in London – of the spectacular Tower Bridge and the London Skyline. In addition to the stunning boats located within the marina itself, and the three impressive working basins, it is a mixed use development housing prestigious residential accommodation, office tenants, galleries, retailers, myriad restaurants and eateries and a premier London hotel.



# The Clubhouse

## A meeting place on water

Our Floating Hub is a multi-functional space. Featuring two rooms, the Hub can be hired out for larger meetings, dinners or receptions, whereas the smaller room works perfectly as an office away from the office! One of the highlights of the Hub is it's wrap-around terrace and rooftop garden, ideal for enjoying some fresh air in the summer months. The Hub comes complete with the furnishings detailed below.



# The Clubhouse

## A meeting place on water

### Capacities

Total	Dinner	Boardroom	Reception
10	10	10	10

### Dimensions

M <sup>2</sup> (approx.)	Access
75	Pontoon

### Furniture

Lounge space, TV, fully equipped kitchen area	Dining table with 4 chairs, TV and office equipment
---	---

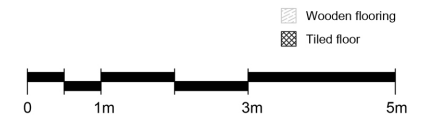
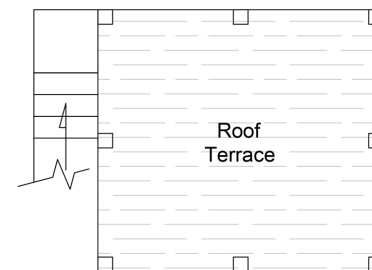
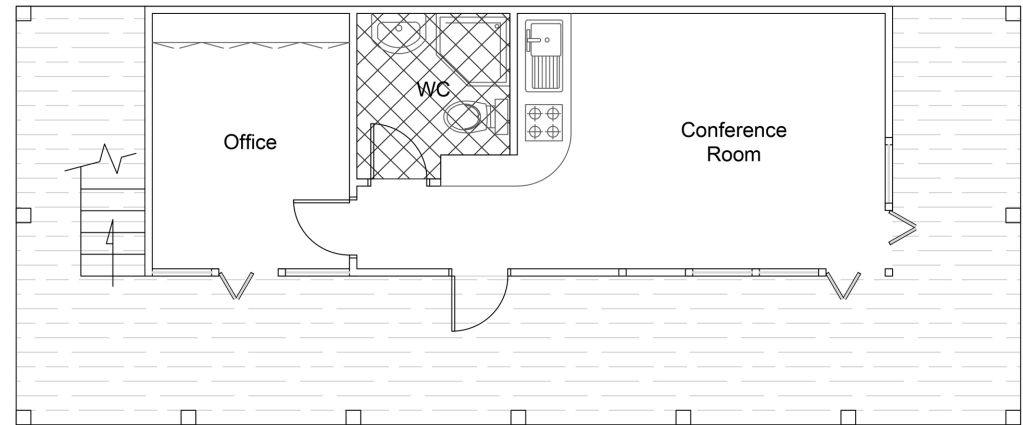
### Facilities

Power	Water
Y	Y

### Bathroom Access

Own Toilet and Shower

*\*DWG Files are available on request*



# The Pontoon

## Your very own island

Our popular Floating Event Pontoon is a truly unique event space. Located on the water, the views over the marina and boats are extremely impressive. The pontoon comes complete with a white stretch tent and festoon lighting, so you don't even need to worry about the British weather. Although normally located in the Centre Basin, the pontoon can be moved to suit your requirements.

The pontoon comes unfurnished or add our furniture packages to suit your event.



# The Pontoon

## Your very own island

### Capacities

Total	Dinner	Boardroom	Reception
90	90	90	90

### Dimensions

M <sup>2</sup> (approx.)	Access
200	Pontoon

### Furniture

Range of benches tables, sofas, bar, and bistro tables and chairs

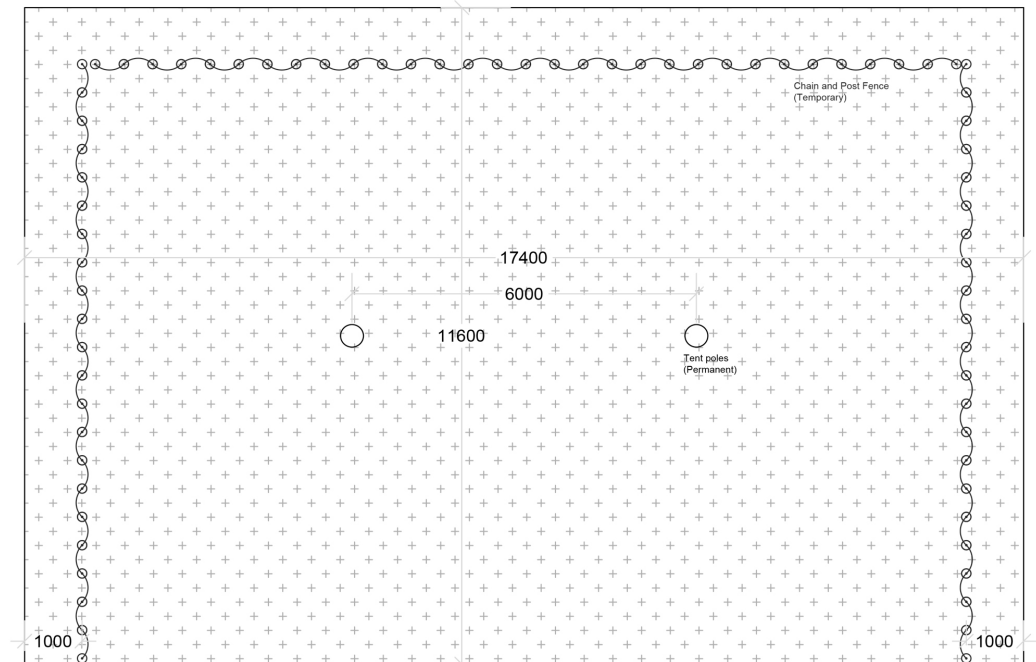
### Facilities

Power	Water
Y	On Request

### Bathroom Access

Public Toilets, Cloisters  
Marina Bathroom Access

*\*DWG Files are available on request*



# Marble Quay

## Open space at the heart of the Docks

Our largest event space on-site is Marble Quay, positioned in the heart of St. Katharine Docks and directly in-front of the famous The Dickens Inn pub. The cobbled, outdoor space lends itself to many event opportunities and will ensure maximum exposure for you and your brand. The space benefits from lovely views of the Centre Basin in the Marina and across most of the Estate. Due to the proximity of residential flats in the area, noise and time restrictions are in place.





# Marble Quay

## Open space at the heart of the Docks

---

### Capacities

Total TBD	Dinner TBD	Boardroom TBD	Reception TBD
--------------	---------------	------------------	------------------

---

### Dimensions

M <sup>2</sup> (approx.)	Access Street
1800	

---

### Furniture

Range of benches tables,  
and bistro tables and chairs

---

### Facilities

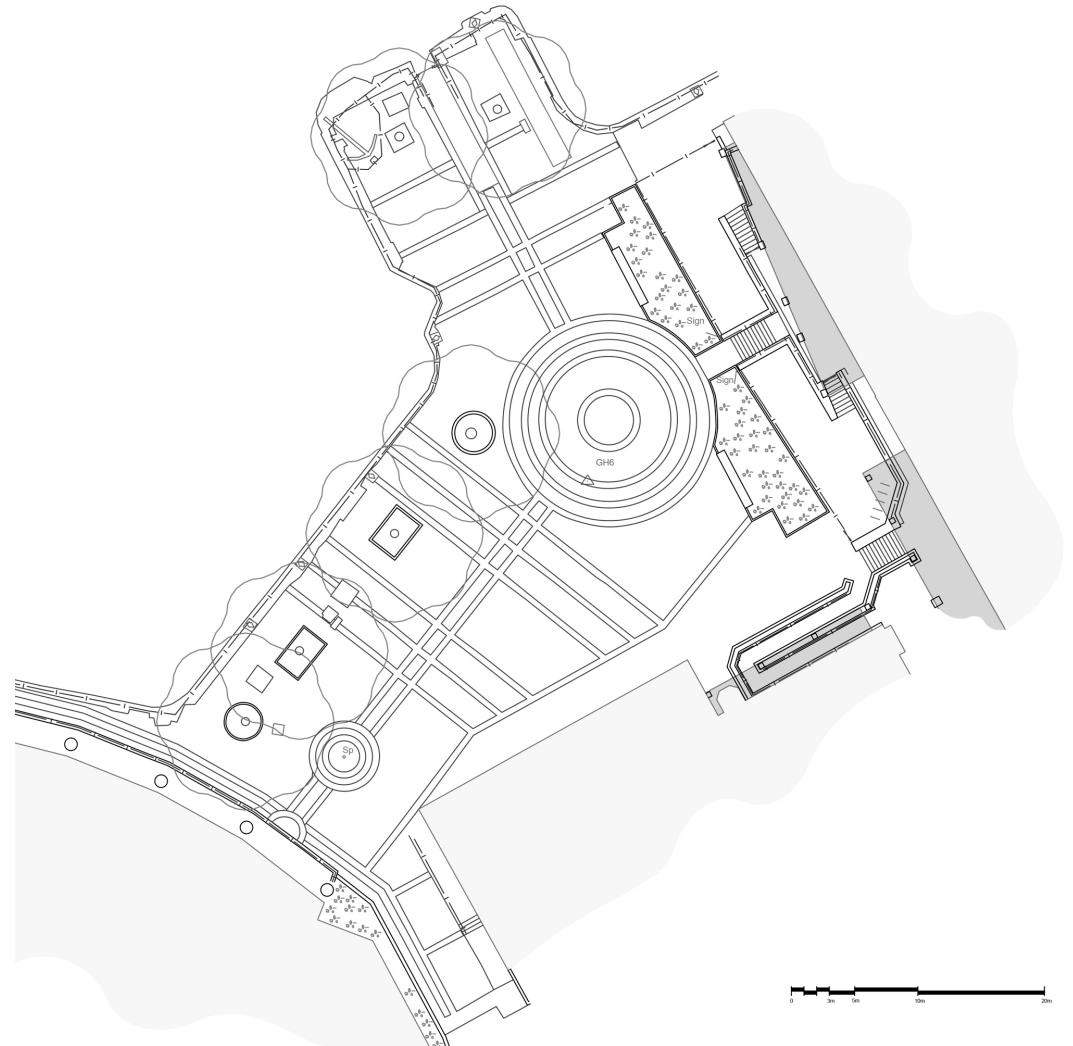
Power	Water
Y	N

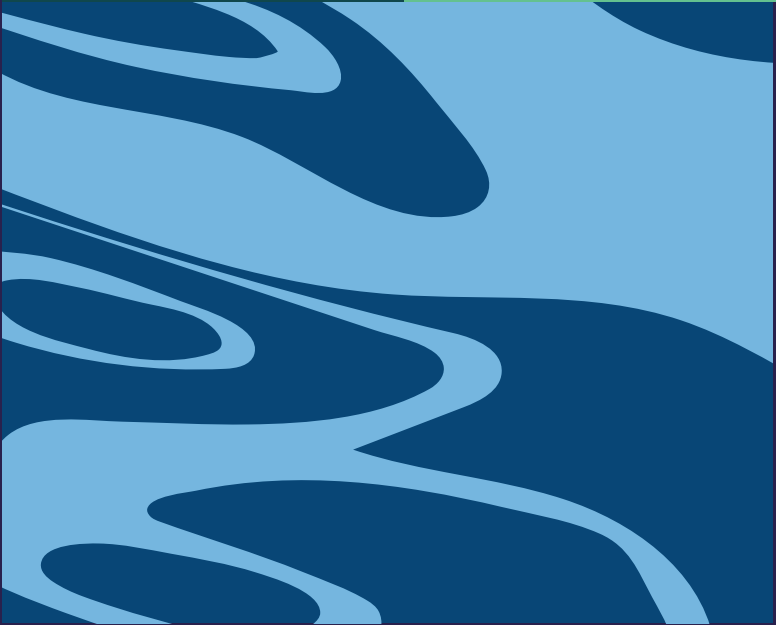
---

### Bathroom Access

Public Toilets, Ivory House

*\*DWG Files are available on request*





Copyright Notice: © Arciv Ltd, All Rights Reserved.  
The content of this document is protected by the copyright laws of  
England and Wales and by international laws and conventions.  
No content from this document may be copied, reproduced or revised  
without the prior written consent of Arciv Ltd. Copies of  
content may be saved and/or printed for personal use only.