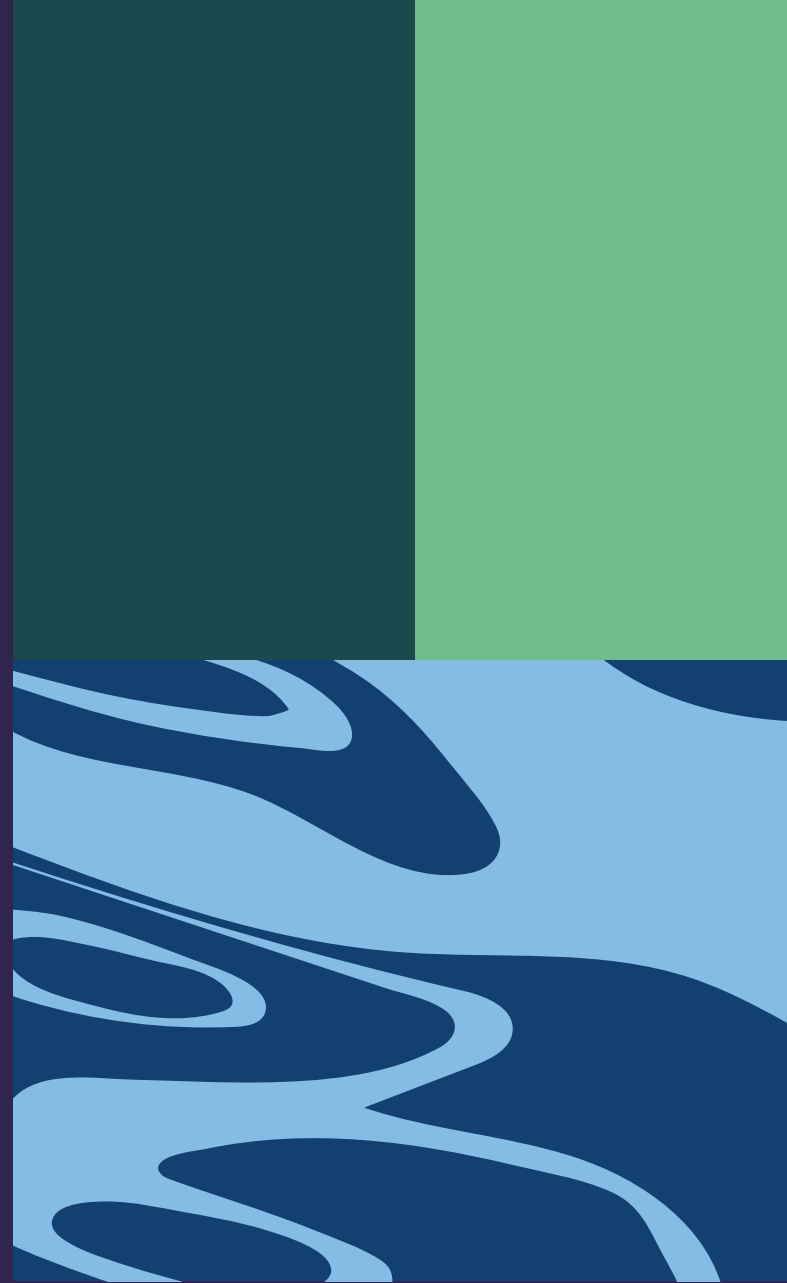


Events at St. Katharine Docks

Our Spaces



Welcome St. Katharine Docks

St. Katharine Docks is Central London's only Marina and provides you with a unique and dynamic backdrop for your event or filming opportunity.

Whether you're looking to host a small intimate event for just ten people, or run an event for hundreds, we would love to hear from you.

The Estate has various spaces available for a range of events or tv and filming opportunities, if you're looking for an iconic London landmark please contact us via events@skdocks.co.uk to discuss your requirements further or to arrange a site visit.



Coronararium

Historic function space

A striking two-level, multi-functional space. Ideal for entertaining, the copper-domed former chapel provides a social lower bar area with a contained fully fitted kitchen and food preparation area, while an upper mezzanine level provides 360 degree views across the marina and historic dock basins.

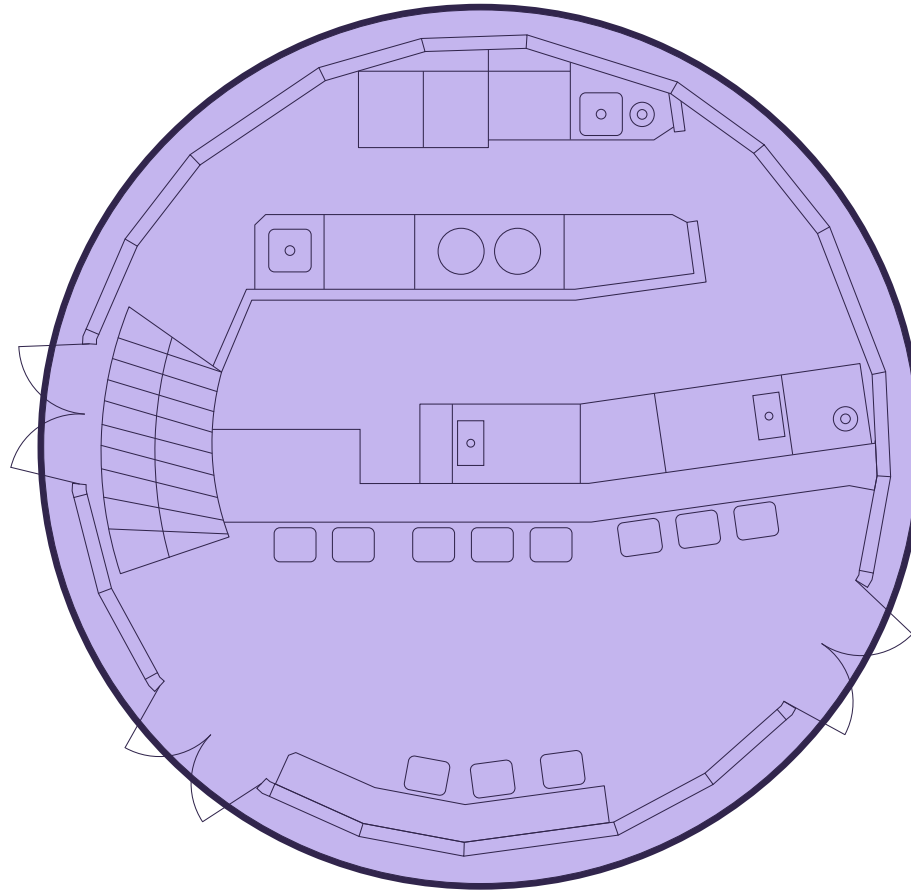


Coronarium

Historic function space

Ground floor – 420 sq ft

⌚ N
Indicative only. Not to scale



Floor	sq ft	sq m
Ground floor	420	39
First floor	342	32
Total	762	71

Figures showing lettable areas.

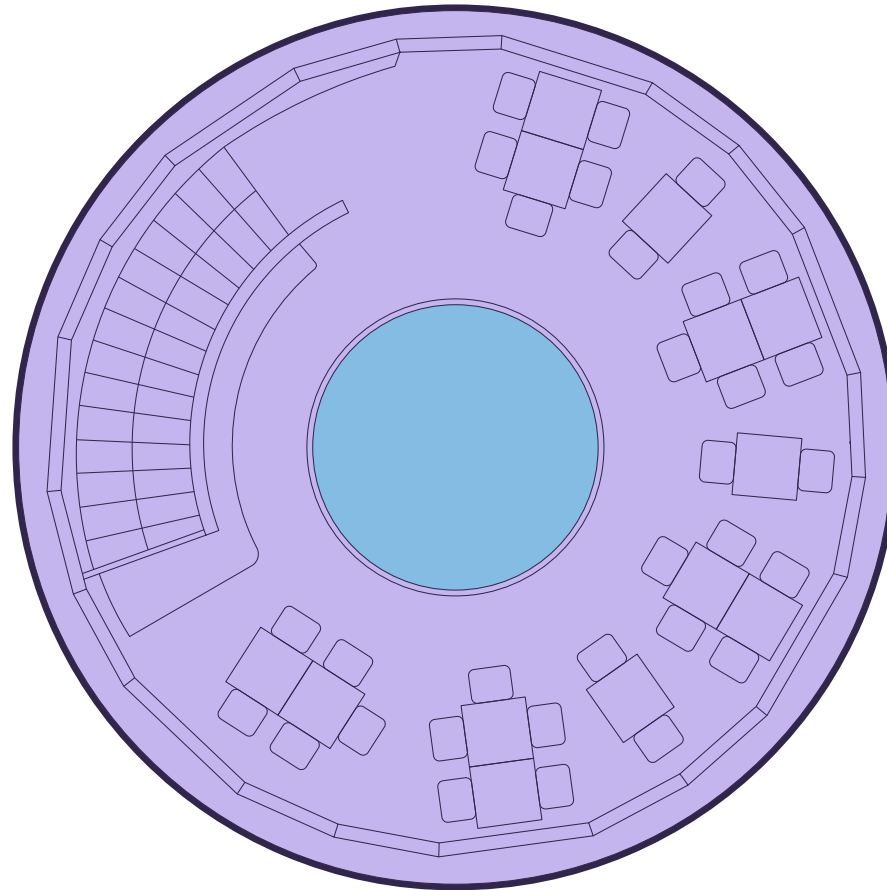


Coronarium

Historic function space

First floor – 342 sq ft

⌚ N
Indicative only. Not to scale



- Available unit
- Atrium

Floor	sq ft	sq m
Ground floor	420	39
First floor	342	32
Total	762	71

Figures showing lettable areas.



The Clubhouse

A meeting place on water

Our Floating Hub is a multi-functional space. Featuring two rooms, the Hub can be hired out for larger meetings, dinners or receptions, whereas the smaller room works perfectly as an office away from the office! One of the highlights of the Hub is it's wrap-around terrace and rooftop garden, ideal for enjoying some fresh air in the summer months. The Hub comes complete with the furnishings detailed below.



The Clubhouse

A meeting place on water

Capacities

Total	Dinner	Boardroom	Reception
10	10	10	10

Dimensions

M ² (approx.)	Access
75	Pontoon

Furniture

Lounge space, TV, fully equipped kitchen area	Dining table with 4 chairs, TV and office equipment
---	---

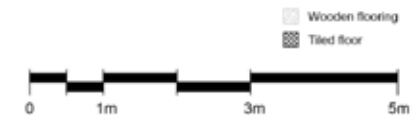
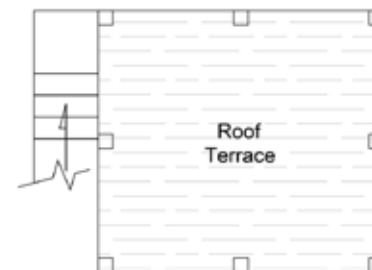
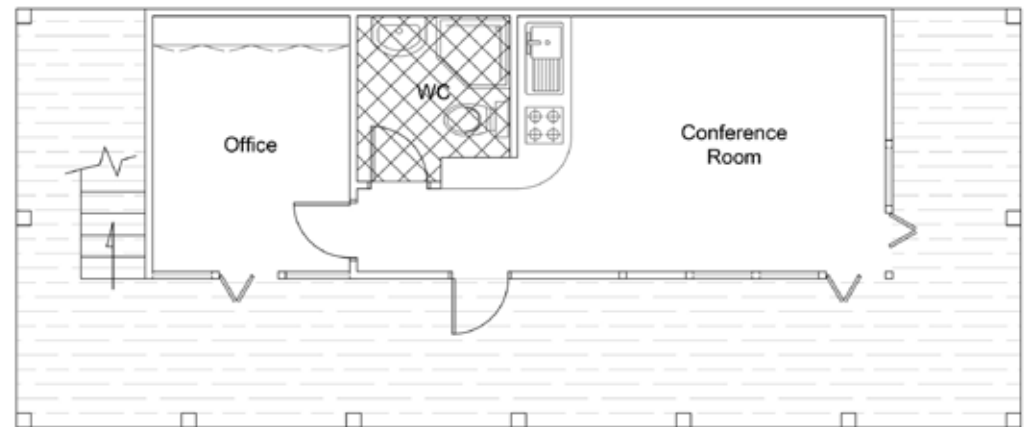
Facilities

Power	Water
Y	Y

Bathroom Access

Own Toilet and Shower

**DWG Files are available on request*



The Pontoon

Your very own island

Our popular Floating Event Pontoon is a truly unique event space. Located on the water, the views over the marina and boats are extremely impressive. The pontoon comes complete with a white stretch tent and festoon lighting, so you don't even need to worry about the British weather. Although normally located in the Centre Basin, the pontoon can be moved to suit your requirements.

The pontoon comes unfurnished or add our furniture packages to suit your event.



The Pontoon

Your very own island

Capacities

Total	Dinner	Boardroom	Reception
90	90	90	100

Dimensions

M ² (approx.)	Access
200	Pontoon

Furniture

Range of benches tables, sofas, bar, and bistro tables and chairs

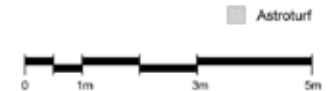
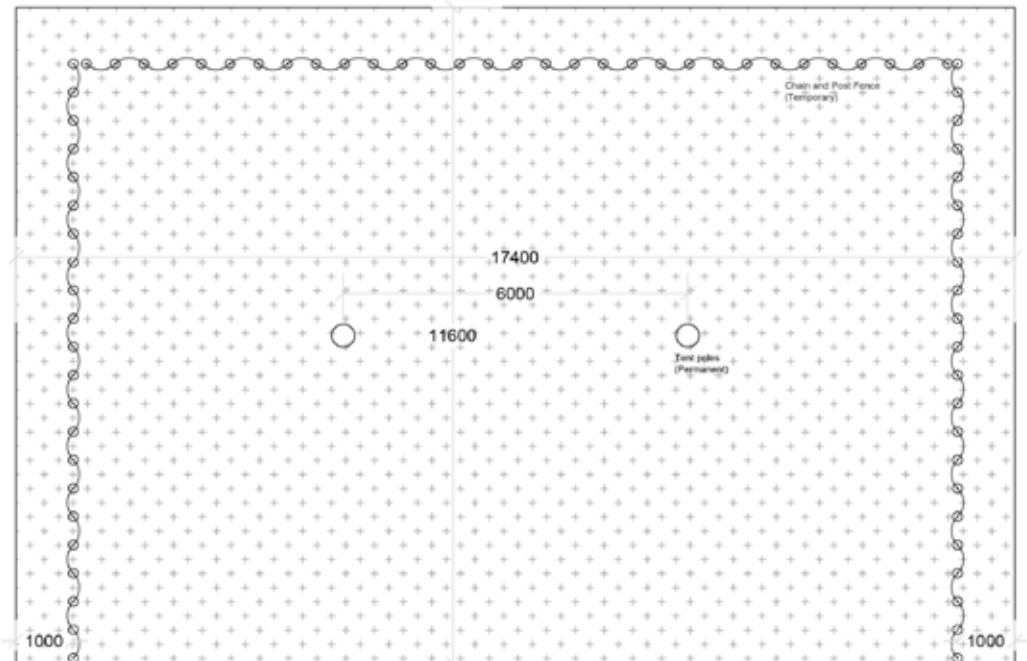
Facilities

Power	Water
Y	On Request

Bathroom Access

Public Toilets, Cloisters
Marina Bathroom Access

**DWG Files are available on request*



Marble Quay

Open space at the heart of the Docks

Our largest event space on-site is Marble Quay, positioned in the heart of St. Katharine Docks and directly in-front of the famous The Dickens Inn pub. The cobbled, outdoor space lends itself to many event opportunities and will ensure maximum exposure for you and your brand. The space benefits from lovely views of the Centre Basin in the Marina and across most of the Estate. Due to the proximity of residential flats in the area, noise and time restrictions are in place.



Marble Quay

Open space at the heart of the Docks

Capacities

Total TBD	Dinner TBD	Boardroom TBD	Reception TBD
--------------	---------------	------------------	------------------

Dimensions

M ² (approx.) 1800	Access Street
----------------------------------	------------------

Furniture

Range of benches tables,
and bistro tables and chairs

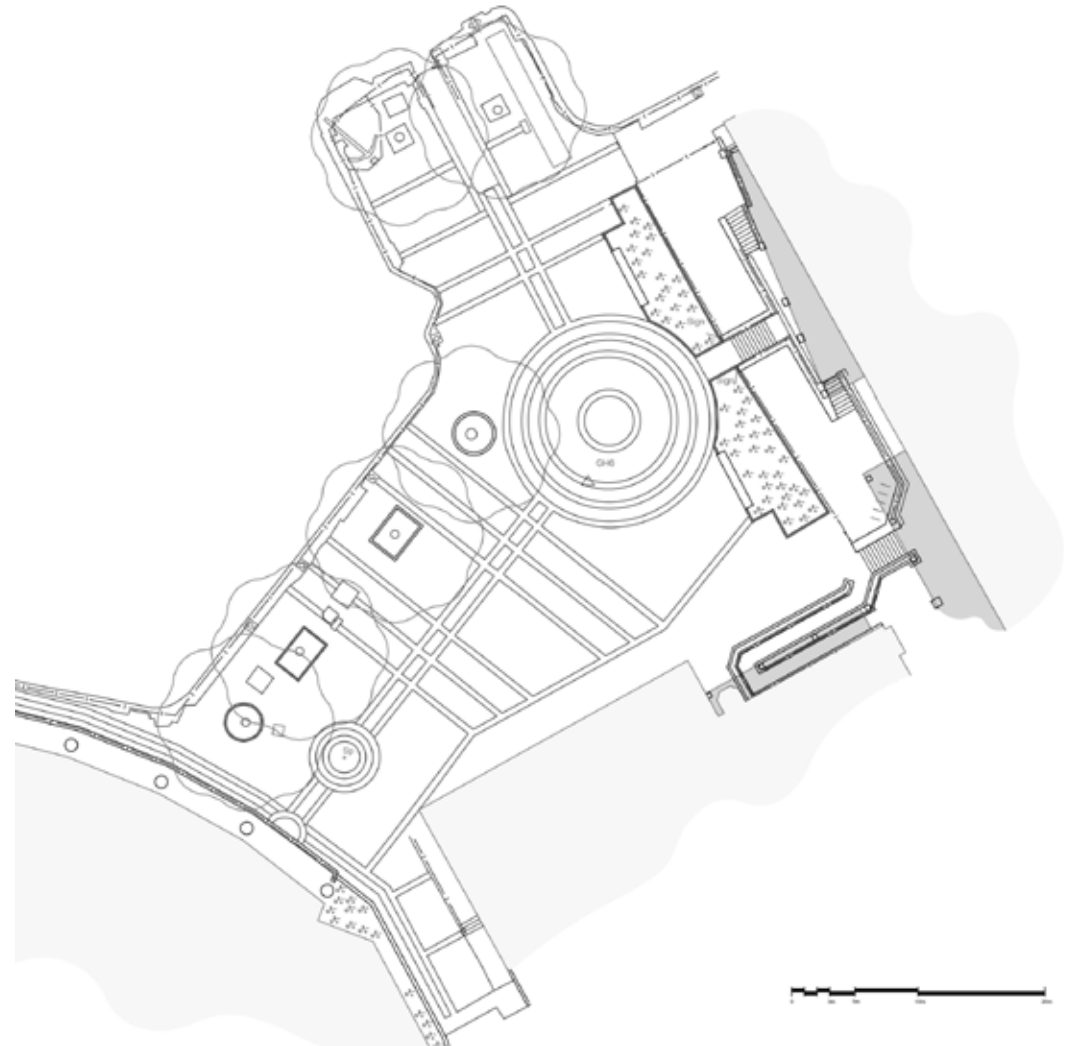
Facilities

Power Y	Water N
------------	------------

Bathroom Access

Public Toilets, Ivory House

**DWG Files are available on request*



Contacts

General enquiries
events@skdocks.co.uk

Claire Frew
cfrew@skdocks.co.uk

Lucie Herring
lucie@gildedherring.com

Debbie Randle
debbie.randle@igymarinas.com

Copyright Notice: © Arciv Ltd, All Rights Reserved.
The content of this document is protected by the copyright laws of
England and Wales and by international laws and conventions.
No content from this document may be copied, reproduced or revised
without the prior written consent of Arciv Ltd. Copies of
content may be saved and/or printed for personal use only.

skdocks.co.uk

